

Langham Village History Group

Adobe PDF Reader

Advanced Search and Multilayers

Contents

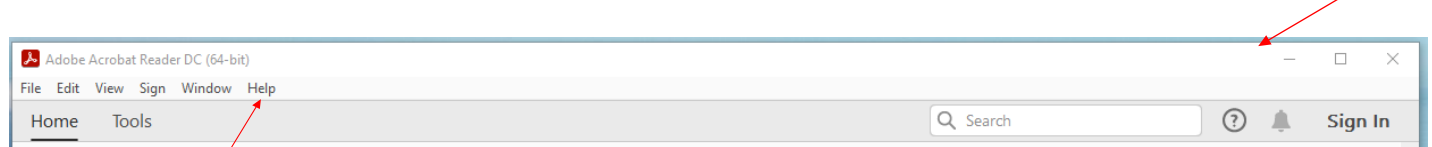
[How to check that you have an up-to-date version of Adobe Reader](#)

[Configuring the Toolbar for Advanced Searching](#)

[A working example of Advanced Search](#)

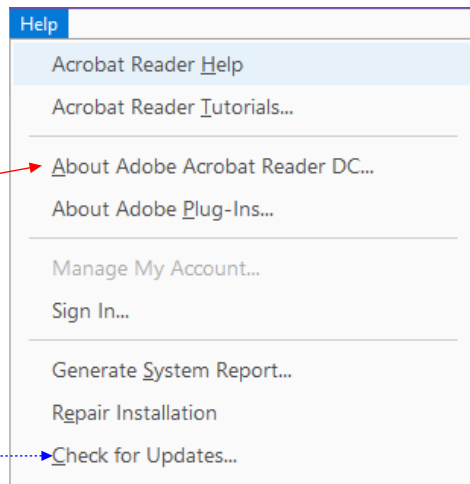
[Using Multilayer pdf files](#)

Start by checking which version of Adobe Acrobat you are using.
To do that start Adobe Reader, look at the tool bar at the top which may look similar to below:



Select the Help Menu

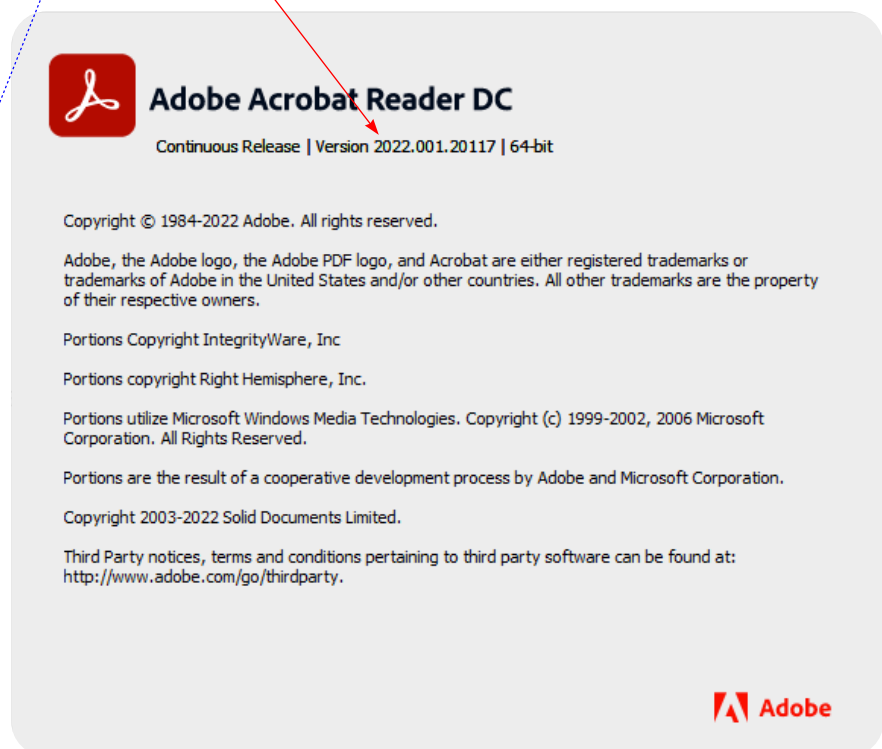
It may look like this snapshot
Select About Adobe Reader DC



The "About" window may look similar to this with a Version Number, which in this illustration is 2022.001.20117 [April 2022]

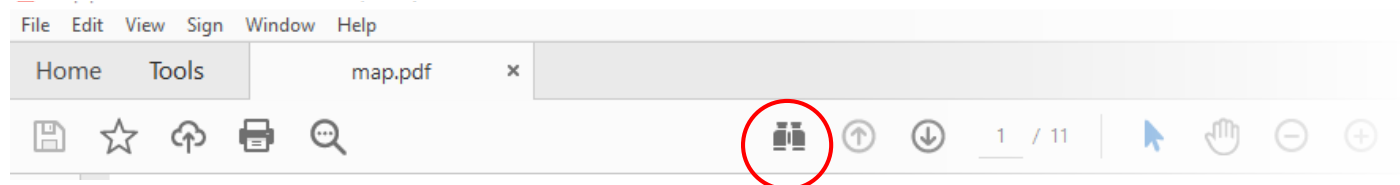
To remove the Adobe Reader window please press the Esc key.

If your Reader version is earlier than version the version shown here please reselect the "Help" menu and select "Check for Updates"



Configuring the Toolbar for Advanced Searching

In recent versions of Adobe Reader the tool bar should look similar to below.



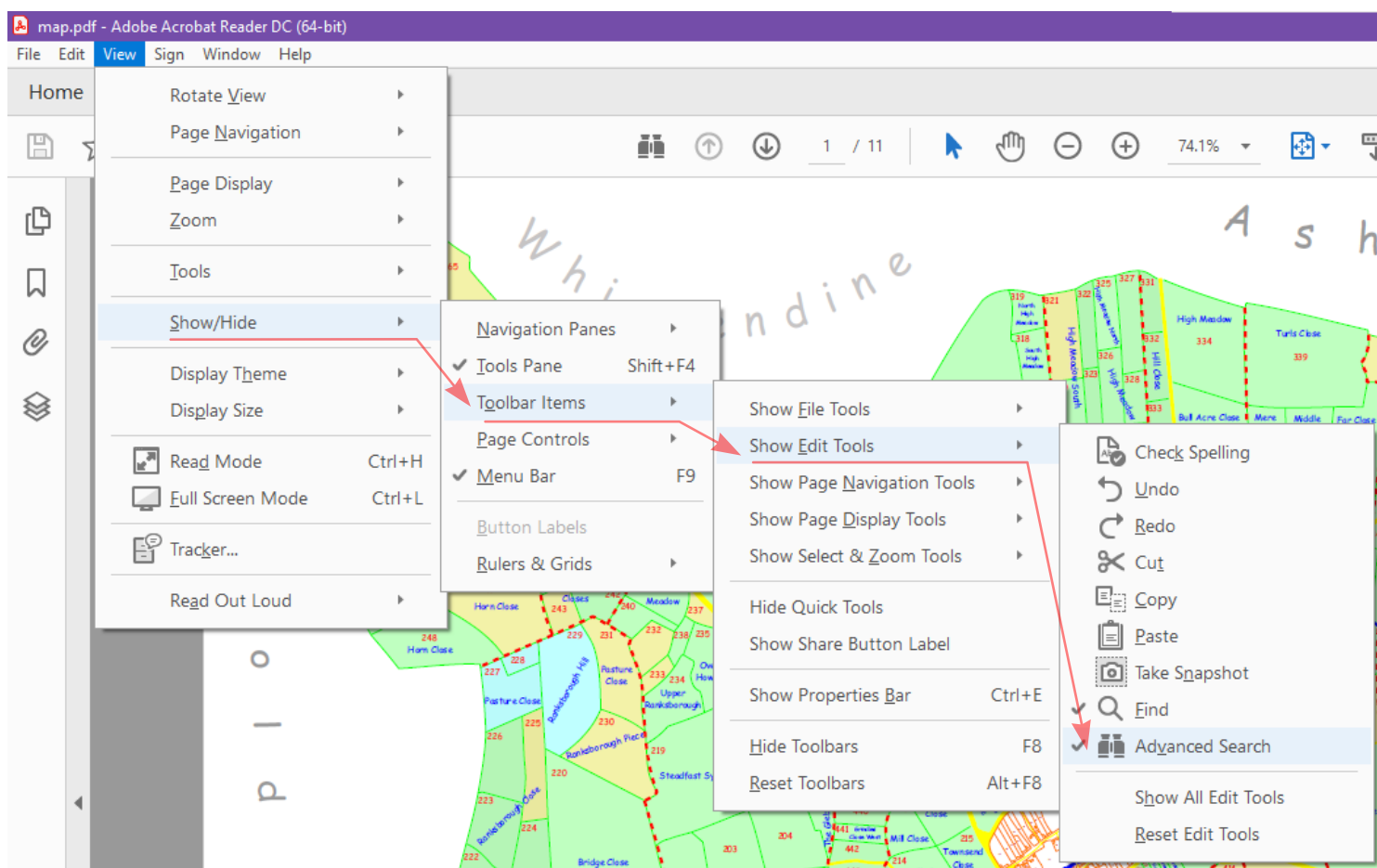
If the binoculars are already on the tool bar, please move to the next page.

To add the binoculars to the tool bar select the following menu items:

“View” > “Show/Hide” > “Toolbar Items” > “Show Edit Tools” finally, Select “Advanced Search”.

Please see the illustration below.

Once completed, move on to the next page



In this example we are using the Langham 1841 Tithe Map and its apportionments:

<http://www.langhaminrutland.org.uk/tithes/map.pdf>

Select the Advanced Search icon (the binoculars) or use the keyboard shortcut “Shift/Ctrl/F” this will open a window similar to the one on the right.

Select Arrange Windows which will position the main and search windows so that you can view both together

Type the word or words you are searching for here

Make sure none of these boxes are ticked

Finally select the “Search” Button

Search

Arrange Windows

Where would you like to search?

☒ In the current document

☐ All PDF Documents in

My Documents

What word or phrase would you like to search for?

Dain

☐ Whole words only

☐ Case-Sensitive

☐ Include Bookmarks

☐ Include Comments

Search

[Show More Options](#)

[Find a word in the current document](#)

Search

Arrange Windows

Looking For:
Dain in the current document

Results:
1 document(s) with 19 instance(s)

New Search

Results:

Tithe Award - Langham in Rutland

- Henry Dain 11 Bridge Close Grass 2 0 21 8 0 " Earl
- Henry Dain 98 Bridge Close yard Grass 20 John Chapman William Chapman 99 Yard
- Henry Dain 104 Homestead & Close Garden 35 6 1 1/2 " "
- Henry Dain 128 Home Piece Arable 1 8 Earl of Gainsborough (Small Tenements)
- Henry Dain 220 Bridge Close Grass 45 0 0 8 1 5 6 7
- Henry Dain 351 Bullemore's Close Grass 7 0 17 14 2 8 5 Earl
- Henry Dain 383 Mickley Close Grass 8 1 5 17 8 10 6 Earl
- Henry Dain 384 Mickley's Arable 13 1 0 1 15 5 6 2 9
- Henry Dain 385 Mickleys Meadow Grass 5 1 0 11 2 6 8 Earl
- Henry Dain 386 Mickleys Meadow Grass 9 0 0 1 1 6 12 2
- Henry Dain 388 Burley Lane Grass 7 1 31 19 8 11 6 Earl
- Henry Dain 408 Hoods Close Grass 14 2 0 3 18 7 3 9
- Henry Dain 410 Beavers Close Arable 6 2 25 17 7 3 1 6
- Henry Dain 425 Spring Close Meadow Grass 15 2 7 3 3 10 3
- Henry Dain 426 Thorpes Mere Nook Grass 21 0 0 3 19 6 3
- Henry Dain 427 New Nook Grass 12 1 14 1 14 10 9 10
- Henry Dain 428 Burley Lane Close Grass 4 0 0 2 3 9 0
- William Dain's Executors 429 Burley Lane Close Grass 2 0 5 1 1 4
- William Dain's Executors 430 Far Burley Lane Grass 1 3 22 1 0 3

☒ Collapse file paths

[Show Fewer Options](#)

[Find a word in the current document](#)

The resulting search will open a window similar to the one shown on the left listing all the items containing the search word, in this case “Dain”.

We did not choose to be more selective by opting for “Whole words only” so our result may contain words like Dainton or Dains.

Likewise we choose not to make the search “Case-Sensitive” so we will have found Dain with any mix of upper and lower case letters.

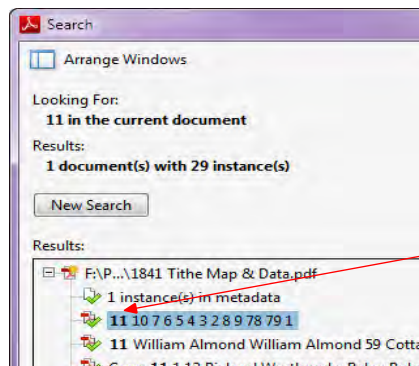
“Bookmarked” text and “Commented” text will not have been searched.

Now we can double click one of the search result links:

Henry Dain 11 Bridge Close... this will move you to the correct page line and highlight the found search term

Earl of Gainsborough (Small Tenements)	James Miller	8	Gardens on Waste			7			
Earl of Gainsborough (Small Tenements)	William Bryan	9	House & Paddock	Garden & Pasture	2	0	1	6	
Charles Hubbard	Himself	10	Cottage & Garden	Garden		27	2	2	
Earl of Gainsborough	John Henry Dain	11	Bridge Close	Grass	2	0	21	8	0
Earl of Gainsborough	John Sewell	12	Cottage & Garden	Garden		3	19	8	6 1/2
Earl of Gainsborough (Small Tenements)	Thomas Clarke	13	Cottage				3		
Earl of Gainsborough	Francis Cox	14	House & Garden	Garden & Grass	1	19	3	5 1/2	
John Hubbard	John Hubbard	15	Garden	Garden		20	3	0	

Earl of Gainsborough (Small Tenements)	James Miller	8	Gardens on Waste				7			
Earl of Gainsborough (Small Tenements)	William Bryan	9	House & Paddock	Garden & Pasture		2	0		1	6
Charles Hubbard	Himself	10	Cottage & Garden	Garden			27		2	2
Earl of Gainsborough	John Henry Dain	11	Bridge Close	Grass	2	0	21		8	0
Earl of Gainsborough	John Sewell	12	Cottage & Garden	Garden		3	19		8	6 1/2
Earl of Gainsborough (Small Tenements)	Thomas Clarke	13	Cottage				3			
Earl of Gainsborough	Francis Cox	14	House & Garden	Garden & Grass		1	19		3	5 1/2
John Hubbard	John Hubbard	15	Garden	Garden			20		3	0

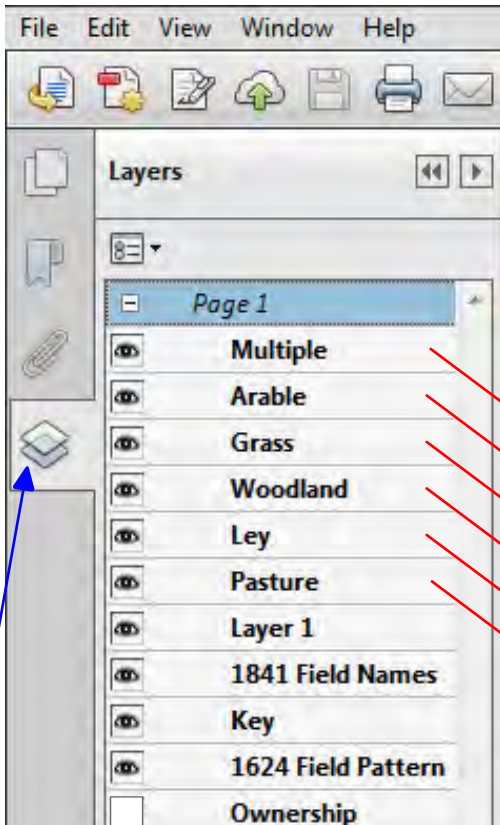


We can see in the above that the owner is the Earl of Gainsborough and that John Henry Dain is the occupier. The plan number is 11 and we can use this to conduct a search to find where this plot is on the parish map. Select the advanced search option again and delete Dain from the search box and type in 11. Then select “Whole words only”, this will narrow the search to find only 11 rather than say 211.

Plot 11 is within the village core and to view this you will need to increase the map magnification to say 1200%. Now double click on the link that shows the number 11 and the map will move to show the location of plot 11.

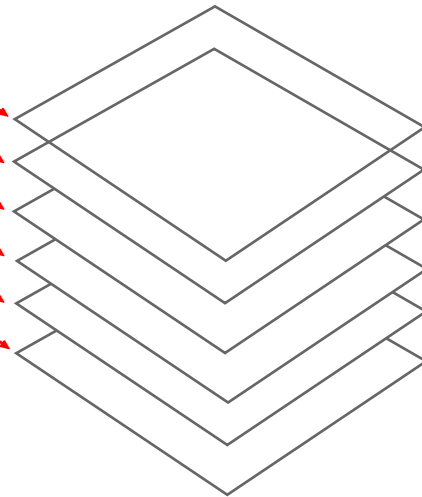


Using “Multilayer” pdf files



If you use an alternative pdf reader to the free version supplied by Adobe, please ensure that it can open multilayer pdf files.

The map page in our example is made up of multiple layers, similar to stacking several sheets of tracing paper on top of each other, each sheet containing different elements of the map each layer and contributing to the complete image when you look through all the sheets.



You can hide or include different named layers to build up the image you would like to view or print. Look at the image above which shows number of menu options. The Blue arrow is pointing to the layers menu icon and depicts a number of sheets stacked vertically. Move the mouse pointer over this icon and select it, the layers list will open to show all the named layers.

In this example there are eleven layers starting with Multiple... and finishing with Ownership. To the left of the names you will see a small box which will either be empty as in Ownership or contain an icon which depicts an eye.

A blank box means that the layer is switched off (not visible), an eye means that the layer is switched on and visible. By moving your mouse pointer over each of the boxes and clicking you can hide or make visible each layer, the result of layers being hidden or visible will be displayed within the main Acrobat page.

The Following page shows the map with the 1624 field patterns hidden. Another simple use for this technique is to hide every layer and then turn on the layer you are looking for, this can be used to advantage on this map if you are looking for woodland, there is so little that making it the only area visible means that you can find it very quickly.

Note: Only the visible layers will be printed, this will allow you to construct a map with only the items you wish to see when printed.

Layers

Page 1

Multiple

Arable

Grass

Woodland

Ley

Pasture

Heathcote

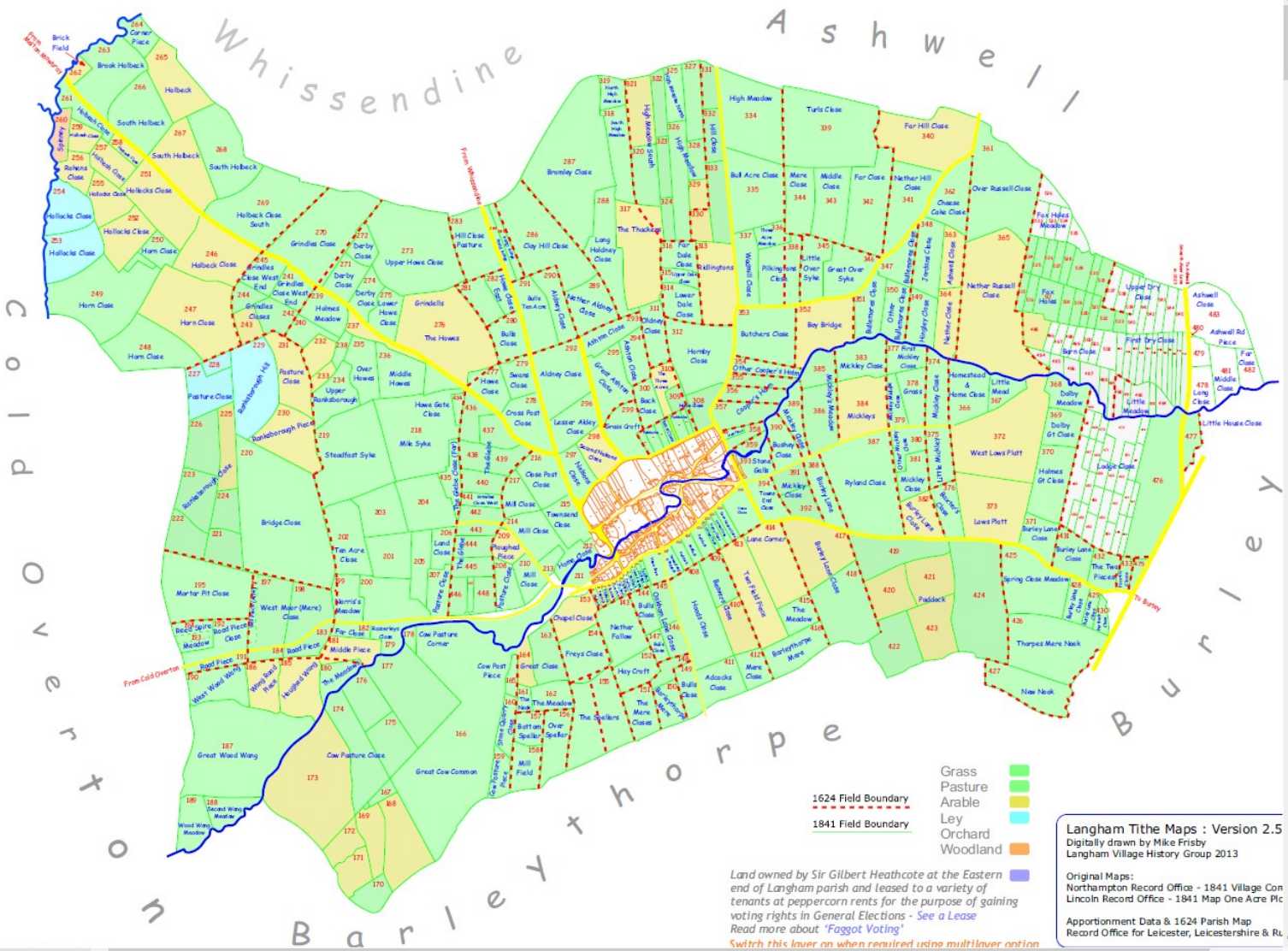
Layer 1

1841 Field Names

Key

1624 Field Pattern

Ownership



Search 'Crop Page'

Export PDF

Adobe Export PDF

Convert PDF Files to Word or Excel Online

Select PDF File

map.pdf

Convert to

Microsoft Word (*.docx)

Document Language: English (U.S.) Change

Convert

Edit PDF

Create PDF

Comment

Combine Files

Organize Pages

Compress PDF

Redact

Create, edit, and e-sign PDF forms & agreements

Free 7-Day Trial